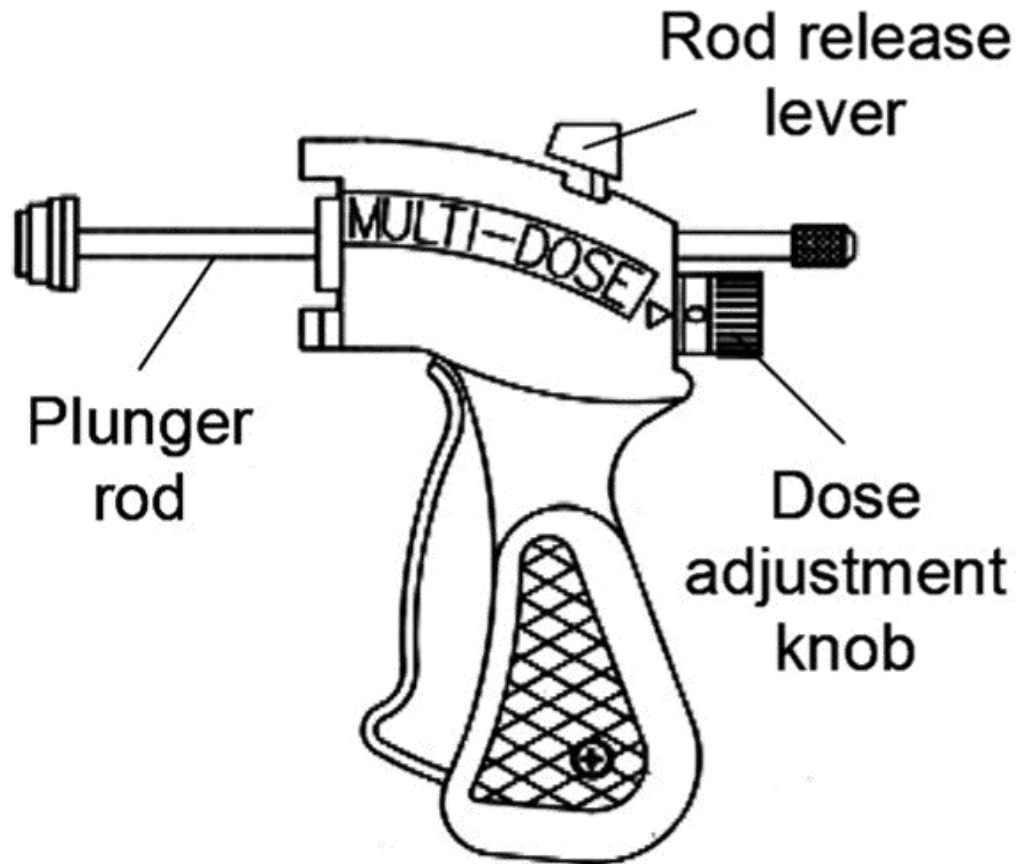




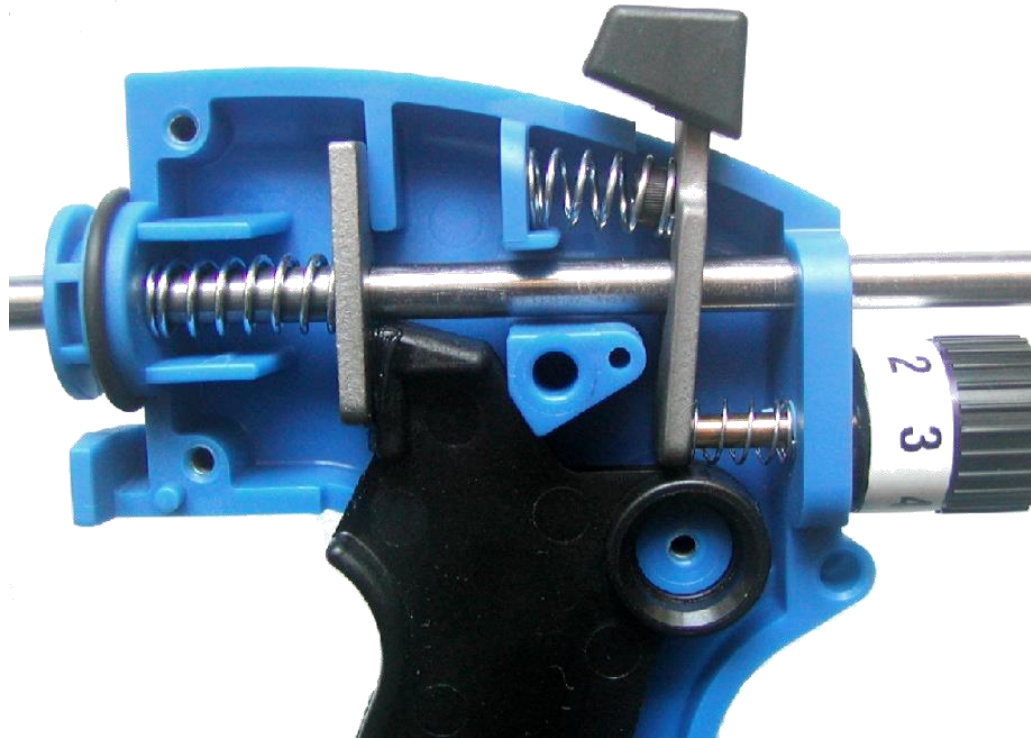
# Multi-Dose Bait Application Gun



# Bait Gun



# How It Works



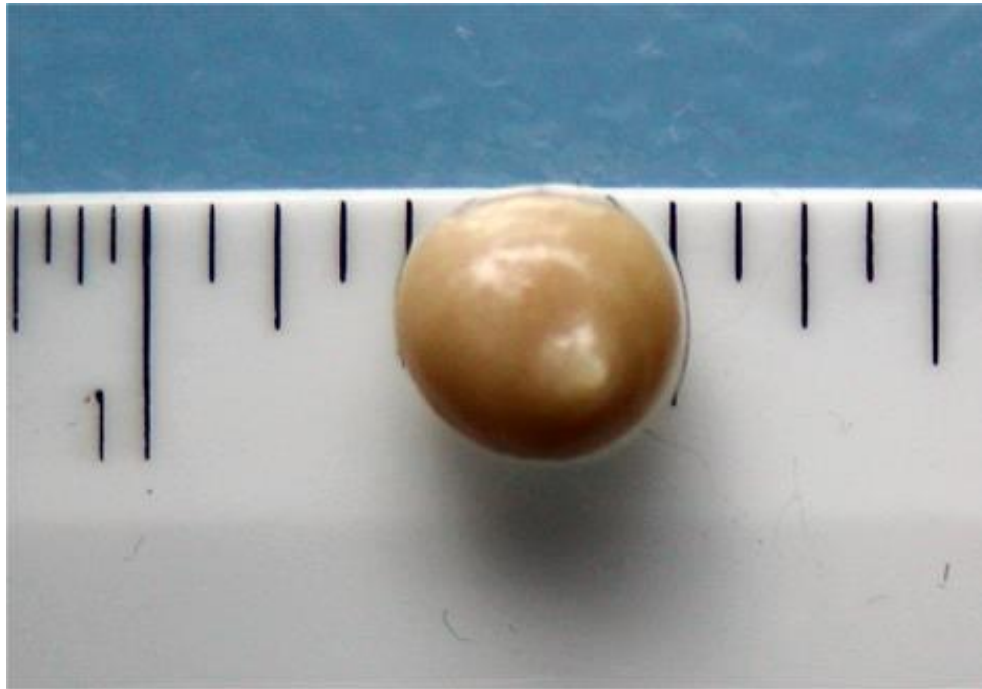
- Calibration based on the technology of levers and micro-movements

# Cockroach Baits



- Cockroaches are attracted to the high water content of bait placements

# Weight or Diameter



- Weight = **0.25 gram**
- Diameter = **6 mm**

# $\frac{1}{4}$ gram Bait Placement

15 males

5 females

45 large nymphs





# 1/2 gram Bait Placement

143 adults



330 nymphs



# Calibrated Bait Gun

- Precision delivery:  
**same amount** with each trigger pull
- Settings:  
**1/4 gram** and **1/2 gram**



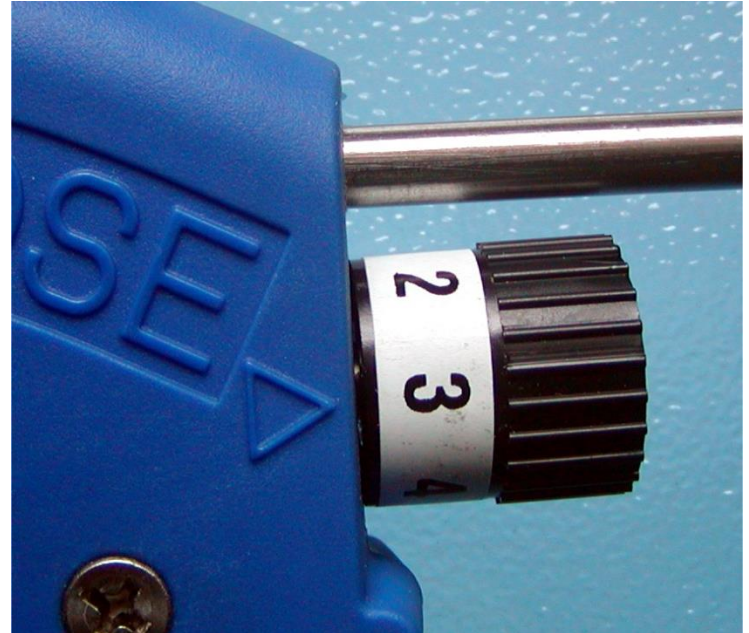


# Calibrated Bait Gun



Setting # 4 delivers a 0.5 gram  
placement

# Calibrated Bait Gun



Setting # 3 delivers a 0.4 gram  
placement

# Look the Same Size

- Bait placements applied by hand look equal
- Difference is **0.15 grams.**

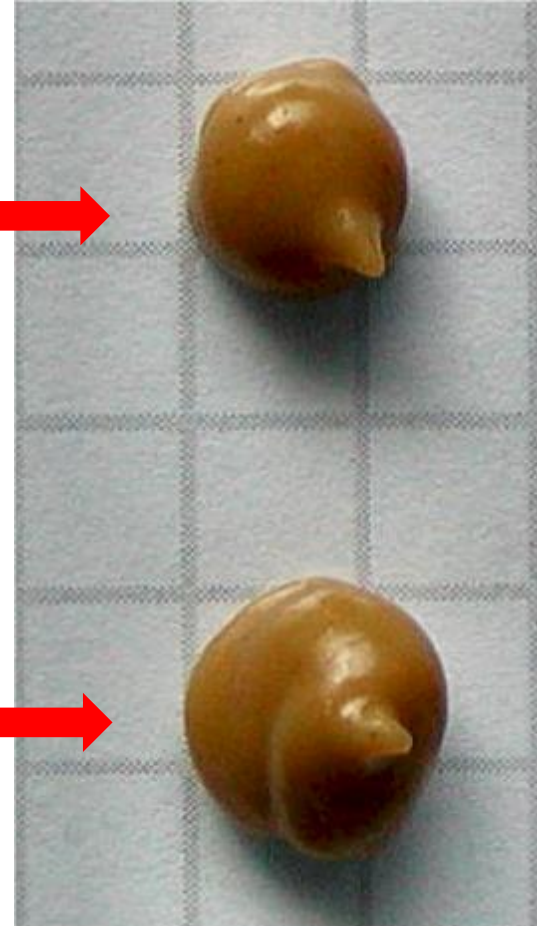


**0.25  
grams**

**0.40  
grams**

# 120 vs. 75 placements

**120 of these** in  
30 gram syringe



**75 of these** in  
30 gram syringe



# Wasted Bait

***45 lost  
placements***



45 bait placements  
is about  $\frac{1}{3}$  of a  
tube

# Transport and Storage

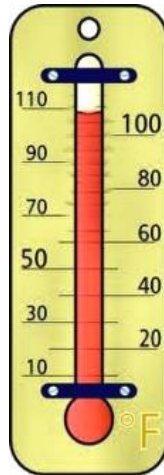
- Holster protect gun while working and in service vehicle





# Application

- Bait delivery influenced by the product and air temperature



# Dosage Settings

- **#1 = 0.25 grams**  
(0.20 – 0.34 grams)



- **#4 = 0.52 grams**  
(0.44 – 0.58 grams)



# Daily Care

- Bait guns require careful use and storage to prevent

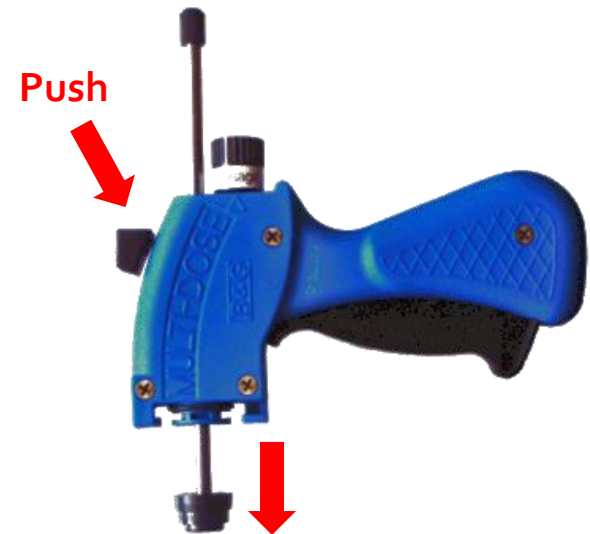


# Handling and Abuse

- Rod may be damaged or bent, keep gun in holster when not in use



# Damaged Plunger Rod



- Push the rod-release lever -  
if rod doesn't drop, it may be bent



# Multi-Dose Bait Application Gun

